



**A guide to the GTEC Plasterboard Solutions range of plasterboard and associated compounds.**

# Product Selector: GTEC Boards and Compounds

# BOARDS AND COMPOUNDS SELECTOR

## GTEC Standard Board

With tapered or square edges are available in a wide range of sizes.

## GTEC Vapour Board

Has a metalised film bonded to one face, which acts as a vapour control layer and can also give improved thermal conductivity. BS EN 14190

## GTEC Plank

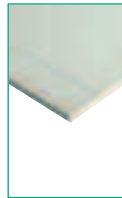
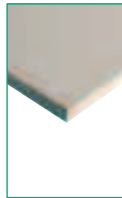
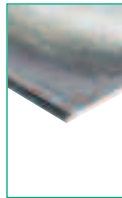
GTEC Plank is 19mm thick, 600mm wide plasterboard.

## GTEC Moisture Board

Designed for those areas where moisture and humidity resistance are required, including bathrooms and kitchens.

## GTEC Fire Board

Offers a higher degree of fire resistance than plasterboard. Also available as a moisture resistant version when both fire moisture resistance is required.



BS EN 520 : 2005 Type	A	N/A	A	H1	D, F
BS1230 : 1985 Type	1	1	1	3 & 4	5

### Linings

GTEC Direct Bond*	✓	✗	✓*	✗	✓
GTEC Dryliner	✓	✓	✓*	✓	✓
GTEC Independent Wall Lining	✓	✓	✓	✓	✓

### Partitions

GTEC Metal Stud	✓	✗	✓	✓	✓
GTEC Acoustic Homespan	✗	✗	✗	✗	✗
GTEC Drywall Timber Stud	✓	✗	✓	✓	✓

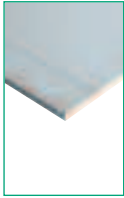
### Floors and Ceilings

GTEC Direct to Timber	✓	✓	✓*	✓	✓
GTEC Acoustic Floor	✗	✗	✓	✗	✓
GTEC Dryliner Ceilings	✓	✓	✓	✓	✓
GTEC Suspended MF Ceilings	✓	✓	✓	✓	✓
GTEC T-Bar Corridor System	✓	✓	✓	✓	✓
GTEC T-Bar Flat Ceiling System	✓	✓	✓	✓	✓

\* Not a typical application

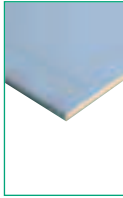
### GTEC E Board

Designed for use in dwellings as defined by Approved Document E regulations.



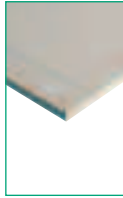
### GTEC dB Board

GTEC dB Board is a heavy duty plasterboard with improved acoustic performance.



### GTEC Acoustic Homespan Board

For use with the Lafarge GTEC Homespan System. 15mm thick, 900mm wide.



### GTEC Universal Board

GTEC Universal Board is the ultimate in convenience plasterboards, offering the user the assurance that the product will offer fire and acoustic performance combined with high levels of impact resistance.



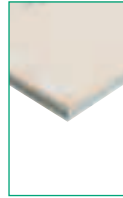
### GTEC Megadeco

Megadeco that is fire, sound and impact resistant plasterboard that has one decorative white face with a colour matched jointing system.



### GTEC Thermal Board

Thermal Board is a range of plasterboard bonded to different types of insulation to suit a variety of thermal requirements. BS EN 13950



### SYNIA

Synia is a unique plasterboard design which, once fixed, reveals four tapered edges for smoother joints.



D	D, I	D	D, F, I, R	D, F, I, R	N/A	A
1	1	1	5	5	N/A	1
✓	✓	✗	✗	✓*	✓	✗
✓	✓	✗	✓	✓	✓	✗
✓	✓	✗	✓	✓	✓	✗
✓	✓	✗	✓	✓	✗	✗
✗	✗	✓	✗	✗	✗	✗
✓	✓	✗	✓	✓	✗	✗
✓	✓	✓*	✓*	✓	✓*	✓*
✗	✓	✗	✓*	✓	✗	✗
✓	✓	✓*	✓*	✓	✓	✓
✓	✓	✓*	✓*	✓	✓	✓
✓	✓	✓*	✓*	✓	✓	✓
✓	✓	✓*	✓*	✓	✓	✓

For further information on plasterboards, please refer to the GTEC Performance Boards brochure

## Use of Jointing Compounds

	<i>Corner tape</i>	<i>Bedding tape</i>	<i>Filling coat</i>	<i>Finishing coat</i>	<i>Sanding paper</i>
GTEC Joint Filler	✓	✓	✓	✗	120 grit
GTEC Joint Cement Xtra	✗	✓	Not required	✓	150 grit
GTEC Smartmix	✗	✓	✓	✓	120 grit
GTEC Joint Cement	✗	✓	✓	✓	150 grit
GTEC Allset Xtra	✓	✓	Not required	✓	120 grit
GTEC Smartmix Xtra	✗	✓	Not required	✓	150 grit

\* Whilst air-drying compounds are suitable for filling joints, it is necessary to leave adequate drying time between each coat.

For further information on compounds, please refer to the GTEC Taping & Jointing System Installation Guide



GTEC drywall screws are designed specifically for use with drywall systems. All screws have extra sharp points for fast penetration and hardened threads for improved grip.

## Product Selector: GTEC Fixings

## Key to colour coded packaging

### ● SELF TAPPING SCREWS

**For attaching plasterboard to light gauge metal wall and ceiling systems**

GTEC Self Tapping

GTEC Megadeco Self Tapping

GTEC Collated Self Tapping



### ● HIGH THREAD SCREWS For attaching plasterboard to timber framework

GTEC High Thread

GTEC Collated

GTEC High Thread



### ● SELF DRILLING SCREWS

**For attaching plasterboard to heavy gauge metal wall and ceiling systems**

GTEC Self Drilling

GTEC Pan Head Self Drilling

GTEC Wafer Head Self Drilling



### ● SPECIALIST SELF TAPPING SCREWS

GTEC Acoustic Floor Self Tapping

GTEC Trim Head Self Tapping

GTEC Pan Head Self Tapping

GTEC Wafer Head Self Tapping



**Please note:** Light gauge metal components have an approximate thickness of 0.5 to 0.7mm – use self tapping screws. Heavy gauge metal components have an approximate thickness of 0.7 to 1.2mm – use self drilling screws.

**GTEC screws are designed as high performing drywall fixings with sharp points and care should be taken when handling boxes or individual fixings.**

# Screws

## SELF TAPPING SCREWS

### GTEC Self Tapping

For attaching plasterboard to light gauge metal stud partitioning and ceiling systems.

Length mm	Gauge	Box Quantity	Boxes Per Carton	Lafarge Code
25*	6	1000	12	25DST1000
32*	6	1000	6	32DST1000
38*	6	1000	6	38DST1000
41	6	1000	6	41DST1000
44	6	1000	6	44DST1000
51	7	500	6	51DST500
57	7	500	6	57DST500
63	8	500	6	63DST500
76	8	250	12	76DST250
86	10	200	6	86DST200

\*Also available in full pallet quantity



### GTEC Collated Self Tapping

Strips of 50 collated drywall screws for use with auto-feed drywall tools

Length mm	Gauge	Box Quantity	Boxes Per Carton	Lafarge Code
25	6	1000	10	25CDST1000
35	6	1000	10	35CDST1000
38	6	1000	10	38CDST1000
44	6	1000	10	44CDST1000



### GTEC Pan Head Self Tapping

For connecting light gauge metal components

Length mm	Gauge	Box Quantity	Boxes Per Carton	Lafarge Code
11	7	500	12	11PHST500



### GTEC Wafer Head Self Tapping

For connecting light gauge metal components beneath plasterboard.

Length mm	Gauge	Box Quantity	Boxes Per Carton	Lafarge Code
14	8	500	12	14WHST500



# Screws

## SELF TAPPING SCREWS



### GTEC Trim Head Self Tapping

Self embedding screw for attaching wood trims to metal

<i>Length mm</i>	<i>Gauge</i>	<i>Box Quantity</i>	<i>Boxes Per Carton</i>	<i>Lafarge Code</i>
41	7	500	12	41THST500
57	7	500	6	57THST500



### GTEC Megadeco Self Tapping

A zinc coated drywall screw specifically designed for fixing Megadeco to light gauge metal and ceiling systems

<i>Length mm</i>	<i>Gauge</i>	<i>Box Quantity</i>	<i>Boxes Per Carton</i>	<i>Lafarge Code</i>
25	7	1000	12	25MST1000
32	7	1000	6	32MST1000
38	7	1000	6	38MST1000
44	7	1000	6	44MST1000



### GTEC Acoustic Floor Self Tapping

For use with the Lafarge GTEC Acoustic Floor System

<i>Length mm</i>	<i>Gauge</i>	<i>Box Quantity</i>	<i>Boxes Per Carton</i>	<i>Lafarge Code</i>
63	7	500	6	63AFST500

# Screws

## HIGH THREAD SCREWS

### GTEC High Thread

For attaching plasterboard to timber stud partitioning and ceiling joists

Length mm	Gauge	Box Quantity	Boxes Per Carton	Lafarge Code
32	6	1000	6	32DHT1000
38	6	1000	6	38DHT1000
41	6	1000	6	41DHT1000
51	7	500	6	51DHT500
63	8	500	6	63DHT500
76	8	250	12	76DHT250
86	10	200	6	86DHT200
96	10	200	6	96DHT200



### GTEC Collated High Thread

Strips of 50 collated drywall screws for use with auto-feed drywall tools

Length mm	Gauge	Box Quantity	Boxes Per Carton	Lafarge Code
38	6	1000	10	38CDHT1000
51	7	800	10	51CDHT800



## SELF DRILLING SCREWS

### GTEC Self Drilling

For attaching plasterboard to heavy gauge metal stud partitioning and ceiling systems. Also suitable for fixing GTEC Universal Board.

Length mm	Gauge	Box Quantity	Boxes Per Carton	Lafarge Code
25	6	1000	12	25DSD1000
32	6	1000	6	32DSD1000
38	6	1000	6	38DSD1000
44	6	1000	6	44DSD1000
67	8	500	6	67DSD500



### GTEC Pan Head Self Drilling

For connecting heavy gauge metal components

Length mm	Gauge	Box Quantity	Boxes Per Carton	Lafarge Code
11	6	500	12	11PHSD500



# Screws

## SELF DRILLING SCREWS



### GTEC Wafer Head Self Drilling

For connecting heavy gauge metal components beneath plasterboard

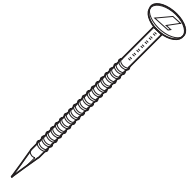
Length mm	Gauge	Box Quantity	Boxes Per Carton	Lafarge Code
14	8	500	12	14WHSD500

## Lafarge Drywall Nails

Zinc electroplated ring shanked nails with thin wide heads and long sharp diamond points for fixing plasterboards to timber framing.

### GTEC Drywall Nails

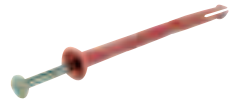
Length mm	Approx Quantity	Pack Size	Lafarge Code
30	13200	20kg	NAIL 30 ZINC
40	11400	20kg	NAIL 40 ZINC
50	8600	20kg	NAIL 50 ZINC
65	4800	20kg	NAIL 65 ZINC



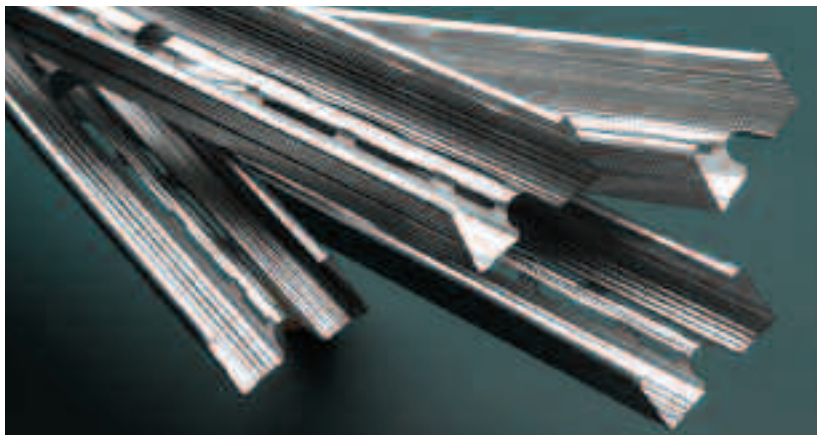
### GTEC Nailable Plugs

For the mechanical fixing of GTEC Thermal Boards.

Length mm	Approx Quantity	Lafarge Code
60	100	NP60
80	100	NP80
100	100	NP100
120	50	NP120



For further information on fixings, adhesives and renders, please refer to the GTEC Fixing Solutions brochure.



**GTEC Ready Reckoners give a quick guide to the components and quantities needed to install a basic length of wall lining or partition.**

**All GTEC components can be purchased or ordered through your nearest Lafarge drywall stockist.**

# Product Selector: GTEC Ready Reckoners

## Wall Linings: Lafarge GTEC Direct Bond System

### Material Calculator – These quantities are based on a 2.4m room height

Wall Lining Length	12.5mm Plasterboard <i>1200mm x 2400mm 2.88m<sup>2</sup></i>	GTEC Universal Bonding Compound <i>25kg Bag 3kg per m<sup>2</sup></i>
3m	7.2m <sup>2</sup>	21.6kg
5m	12m <sup>2</sup>	36kg
7m	16.8m <sup>2</sup>	50.4kg

## Wall Linings: Lafarge GTEC Direct Bond System (GTEC Thermal Board)

### Material Calculator – These quantities are based on a 2.4m room height

Wall Lining Length	12.5mm Plasterboard <i>1200mm x 2400mm 2.88m<sup>2</sup></i>	GTEC Universal Bonding Compound <i>25kg Bag 3kg per m<sup>2</sup></i>	GTEC Nailable Plugs <i>100 per box</i>
3m	7.2m <sup>2</sup>	21.6kg	6 plugs
5m	12m <sup>2</sup>	36kg	10 plugs
7m	16.8m <sup>2</sup>	50.4kg	12 plugs

## Wall Linings: Lafarge GTEC Independent Wall Lining System

### Material Calculator – These quantities are based on a 2.4m room height

Partition Length	15mm Plasterboard	GTEC U Track Length	GTEC C Stud Length	GTEC Self Tapping	GTEC Intumescent Acoustic Sealant	Insulation
	<i>1200mm x 2400mm 2.88m<sup>2</sup></i>	<i>3000mm</i>	<i>2400mm</i>	<i>25mm</i>	<i>0.9 ltr tube: 15 lm</i>	<i>(if required)</i>
3m	7.2m <sup>2</sup>	6 lm	14.4 lm	130 screws	0.7 ltr	0.35m <sup>2</sup>
5m	12m <sup>2</sup>	10 lm	24 lm	215 screws	0.9 ltr	0.45m <sup>2</sup>
7m	16.8m <sup>2</sup>	14 lm	31.2 lm	300 screws	1.1 ltr	0.55m <sup>2</sup>

## Wall Linings: Lafarge GTEC Dryliner System

**Material Calculator – These quantities are based on a 2.4m room height, joist width at 600mm**

Partition Length	12.5mm Plasterboard	Track Length	GTEC SR Bracket	Channel Length	GTEC Pan Head Self Tapping	GTEC Self Tapping	Insulation
	1200mm x 2400mm 2.88m <sup>2</sup>	3000mm	100 per box	2400mm	500 per box	1000 per box	(if required)
3m	7.2m <sup>2</sup>	6 lm	12	14.4 lm	28 screws	130 screws	7.2m <sup>2</sup>
5m	12m <sup>2</sup>	10 lm	20	24 lm	52 screws	210 screws	12m <sup>2</sup>
7m	16.8m <sup>2</sup>	14 lm	26	31.2 lm	70 screws	300 screws	16.8m <sup>2</sup>

*GTEC Intumescent Acoustic Sealant should be used to seal all gaps at system perimeter*

## Partitions: Lafarge GTEC Metal Stud System

**Material Calculator – These quantities are based on a 2.4m room height**

Partition Length	15mm Plasterboard	GTEC U Track Length	GTEC C Stud Length	GTEC Self Tapping	GTEC Intumescent Acoustic Sealant	Insulation
	1200mm x 2400mm 2.88m <sup>2</sup>	3000mm	2400mm	25mm	0.9 ltr tube: 15 lm	(if required)
3m	14.4m <sup>2</sup>	6 lm	14.4 lm	260 screws	0.7 ltr	7.2m <sup>2</sup>
5m	24m <sup>2</sup>	10 lm	24 lm	430 screws	0.9 ltr	12m <sup>2</sup>
7m	33.6m <sup>2</sup>	14 lm	31.2 lm	600 screws	1.1 ltr	16.8m <sup>2</sup>

## Partitions: Lafarge GTEC Acoustic Homespan System

**Material Calculator – These quantities are based on a 2.4m room height**

Partition Length	15mm Plasterboard	GTEC U Track Length	GTEC C Stud Length	GTEC Self Tapping	GTEC Intumescent Acoustic Sealant
	1200mm x 2400mm 2.88m <sup>2</sup>	3000mm	2400mm	25mm	0.9 ltr tube: 15 lm
3m	14.4m <sup>2</sup>	6 lm	14.4 lm	260 screws	0.7 ltr
5m	24m <sup>2</sup>	10 lm	24 lm	430 screws	0.9 ltr
7m	33.6m <sup>2</sup>	14 lm	31.2 lm	600 screws	1.1 ltr

*N.B. This material calculator should only be used as a guide - it may not suit all circumstances.  
Contact Lafarge Technical Enquiryline for further assistance, on Telephone 01275 377789.*

## Floors and Ceilings: Lafarge GTEC Acoustic Floor System

### Material Calculator – Quantities are per m<sup>2</sup> for Lafarge GTEC Acoustic Floor System

Lafarge Code	Product Description	Joint Spacing 400mm	Joint Spacing 450mm	Joint Spacing 600mm
RAFC25	GTEC Acoustic Floor Clips	13 clips	11.5 clips	8.5 clips
RAFT50	GTEC Resilient Tape	2.5m	2.25m	1.7m
MFC2330	GTEC Metal Angle	5.0m	4.5m	3.5m
	15mm GTEC dB Board	1.0m <sup>2</sup>	1.0m <sup>2</sup>	1.0m <sup>2</sup>
	57mm GTEC Trim Head screws with:			
	18mm T&G chipboard	18 screws	16 screws	12.5 screws
	18mm T&G softwood Boarding (or 63mm GTEC Acoustic Floor screws with 22mm T&G flooring)	39.5 screws	35 screws	27 screws
	GTEC Intumescent Acoustic Sealant for sealing around skirtings	Not calculated by m <sup>2</sup>		

### Material Calculator – Quantities are per m<sup>2</sup> for Lafarge GTEC Ceiling System

Lafarge Code	Product Description		
RBD3000	GTEC Resilient Bars	either 450 centres for 2.7m plasterboard or 400 centres for 2.4m plasterboard	= 2.22m = 2.5m
32DHT	GTEC High Thread screws		= 7 screws
	2 layers 15mm GTEC dB Board		= 2.0m <sup>2</sup>
25DST	GTEC Self Tapping screws		= 20 screws
45DST	GTEC Self Tapping screws		= 20 screws

**Plus for all systems, GTEC jointing materials and GTEC Universal Sealer, GTEC Intumescent Acoustic Sealant to ceiling perimeters.**

## Floors and Ceilings: Lafarge GTEC Dryliner Ceiling System.

### Material Calculator – These quantities are based on a 2.4m room height, joist width at 600mm

Partition Length	12.5mm Plasterboard	Track Length	GTEC SR Bracket	Channel Length	GTEC Pan Head Self Tapping	GTEC Self Tapping	Insulation
	1200mm x 2400mm 2.88m <sup>2</sup>	3000mm	100 per box	2400mm	500 per box	1000 per box	(if required)
3m	7.2m <sup>2</sup>	6 lm	24	14.4 lm	28 screws	144 screws	7.2m <sup>2</sup>
5m	12m <sup>2</sup>	10 lm	40	24 lm	52 screws	240 screws	12m <sup>2</sup>
7m	16.8m <sup>2</sup>	14 lm	52	31.2 lm	70 screws	336 screws	16.8m <sup>2</sup>

## Floors and Ceilings: Lafarge GTEC Suspended MF Ceiling System

### Material Calculator – These quantities are per m<sup>2</sup>

Lafarge Code	Description of Product	GTEC Primary Channels at		
		1200mm Centres	900mm Centres	600mm Centres
MFCE26	GTEC Edge Channel (perimeter of room concerned being the accurate figure)	0.6m approx	0.6m approx	0.6m approx
MFCP44	GTEC Primary Channel	0.9m	1.2m	1.8m
MFC50	GTEC Ceiling Channel at 400mm centres	2.65m	2.65m	2.65m
MFCCLIP or 14WHSD	GTEC Connecting Clip or GTEC Wafer Head Self Drilling screws	2.2 clip or 5 screws	n/a or 6 screws	n/a or 9 screws
MFC2330	GTEC Metal Angle, per 100mm ceiling drop	0.075m	0.1m	0.15m
11PHSD	GTEC Pan Head Self Drilling screws (to fix angle hanger to primary channel) Plus, if required, at the top of each MFC2330 metal angle hanger	2 screws	2 screws	3 screws
MFCCLEAT	GTEC Soffit Cleat	GTE 1 Soffit Cleat	GTEC 1.25 Soffit Cleat	GTEC 1.5 Soffit Cleat
	Appropriate Nut & Bolt	1Nut & Bolt	1.25 Nut & Bolt	1.5 Nut & Bolt
	Plasterboard fixing screws	16 screws per m <sup>2</sup> per Board (length dependent upon Board thickness)		
Plus plasterboard and jointing materials or skim plaster, (plus mineral wool if applicable)				

## Floors and Ceilings: Lafarge GTEC T-Bar Flat Ceiling and Corridor Systems

### Material Calculator – Lafarge GTEC T-Bar Flat Ceiling System

Lafarge Code	Quantity per m <sup>2</sup>	Single Layer Board	Double Layer Board
TE300	GTEC Edge Channel (perimeter of room concerned being the accurate figure)	0.6m approx.	0.6m approx.
TP3700	GTEC Primary Main T-Bar	0.9m	0.9m
TC1200	GTEC Cross T-Bar	2.65m or 2½ Cross T's	2.65m or 2½ Cross T's
MF2330	GTEC Metal Angle Per 100mm ceiling drop	0.075m	0.1m
11PHST500	GTEC Pan Head Self Tapping screws	2 off	2 off
MFCCLEAT	GTEC Soffit Cleat	1 off	2 off
	Appropriate Nut & Bolt	1 off	2 off
	GTEC Plasterboard Solutions	1.05m <sup>2</sup>	2.10m <sup>2</sup>

### Material Calculator – Lafarge GTEC T-Bar Corridor Ceiling System

m <sup>2</sup>	Span m	Length m	Drop m	GTEC Corridor Span T's Qty	GTEC Edge Channels Qty
18	1.8	10	1	24	8
19	1.9	10	1	24	8
20	2.0	10	1	33	8

**Plus for all systems, GTEC jointing materials and GTEC Universal Sealer, GTEC Intumescent Acoustic Sealant to ceiling perimeters.**

**N.B. This material calculator should only be used as a guide (T-Bar based on rectangular areas) - it may not suit all circumstances. Contact Lafarge Technical Enquiryline for further assistance, on Telephone 01275 377789.**

# Coverages

<i>Product</i>	<i>Pack Size</i>	<i>Approximate Coverage per Pack</i>		<i>Shelf Life</i>
<b>Jointing Compounds</b>				
GTEC Joint Filler	12.5 kg	25m <sup>2</sup>	for filling and bedding only	4 months
		37m <sup>2</sup>	as a bedding coat only	4 months
GTEC Allset Xtra	10 kg	25m <sup>2</sup>	for a full taping operation	4 months
	10 kg	47m <sup>2</sup>	as a bedding coat only	4 months
GTEC Joint Cement	25 kg	55m <sup>2</sup>	for a full taping operation	6 months
		165m <sup>2</sup>	for a finishing coat	6 months
GTEC Joint Cement Xtra	22.5 kg	64m <sup>2</sup>	for a full taping operation	6 months
		174m <sup>2</sup>	for a finishing coat	6 months
GTEC Smartmix	20 kg	45m <sup>2</sup>	for a full taping operation	6 months
		120m <sup>2</sup>	for a finishing coat	6 months
GTEC Smartmix Xtra	20 kg	50m <sup>2</sup>	for a full taping operation	6 months
		135m <sup>2</sup>	for a finishing coat	6 months
GTEC Deco Joint Cement	20 kg	50m <sup>2</sup>	for a full taping operation	6 months
		135m <sup>2</sup>	for a finishing coat	6 months
GTEC Deco Machine	20 kg	50m <sup>2</sup>	for a full taping operation	6 months
		135m <sup>2</sup>	for a finishing coat	6 months
GTEC Deco Filler	12.5 kg	25m <sup>2</sup>	for filling and bedding only	4 months
<b>Sealers</b>				
GTEC Universal Sealer	10 litres	100m <sup>2</sup>		12 months
GTEC Drywall Sealer	10 litres	100m <sup>2</sup>	(one coat)	12 months
		70m <sup>2</sup>	(two coats)	12 months
<b>Adhesives &amp; Renders</b>				
GTEC Ecoat	25 kg	5m <sup>2</sup>	when used as a parge coat render	6 months
GTEC Universal Bonding Compound	25 kg	8m <sup>2</sup>	direct bonded internal walls	5 months
		4m <sup>2</sup>	direct bonded external walls	5 months
GTEC Drywall Adhesive	5 litres	50m <sup>2</sup>		12 months
GTEC Cove Adhesive	12.5 kg		33 linear metres of cove	4 months
<b>Accessories</b>				
GTEC Intumescent Acoustic Sealant 0.9 litres			32 linear metres per litre, based on 6mm bead	12 months
	0.38 litres		32 linear metres per litre, based on 6mm bead	12 months
GTEC Intumescent Acoustic Sealant 0.6 litres (foil refill)			32 linear metres per litre, based on 6mm bead	12 months

## Storage Notes

The above products should be stored in dry, well ventilated conditions with a minimum temperature of 5°C. Timber platforms or pallets should be laid to keep products clear of the floor.

Stock to be rotated, using the oldest first.

The absorption of moisture, by any gypsum based powder product, shortens the setting time and may reduce its in service strength.